

2024

Luxury DEFINED



**BELTSPOKE**™

WOMENS ARTISAN LEATHER GOODS



# BROCHURE

WOMEN'S HAND MADE ARTISAN LUXURY BRIDLE LEATHER BELTS



PART OF THE **MR CHRISTIAN** GROUP OF BRANDS



## EXCLUSIVELY FOR WOMEN

BELTSPOKE IS A NEW LUXURY WOMENS LEATHER GOODS AND FASHION BRAND DEVOTED TO THE BESPOKE ARTISAN PRODUCTION OF BRIDLE LEATHER BELTS AND ALIGNED ACCESSORIES. FOR TODAY'S FASHIONISTA SISTA OR DESIGNER DIVA'S.

ETHICAL, SUSTAINABLE AND TRANSPARENT WITH VETTED AND CERTIFIED SUPPLY CHAINS, FUSING TRADITION AND HERITAGE WITH MODERN AND CONTEMPORARY DESIGN, BUT WITH A TWIST FOR SOMETHING A LITTLE BIT DIFFERENT.

AT THE HEART OF IT ALL IS THE DESIRE TO EMBRACE FREEDOM OF EXPRESSION AND PERSONAL INDIVIDUALITY WHILST REMAINING LIMITED AND EXCLUSIVE.



**BELTSPOKE**

**WHAT WE DO**

WE SPECIALISE EXCLUSIVELY IN THE DESIGN, PRODUCTION AND SALE OF HERITAGE TRADITIONAL AND CONTEMPORARY BRIDLE LEATHER BELTS FOR WOMEN. COLLABORATING WITH LEADING INDUSTRY ROYAL WARRANTED ARTISAN MAKERS AND LEATHER SUPPLIERS. WE MANUFACTURE OUR PRODUCTS BY HAND USING ARTISAN SKILL SETS PROVEN OVER HUNDREDS OF YEARS.

THE BRAND BELTSPOKE IS UNDER PINNED BY THE FOLLOWING CORE VALUES

## MISSION

TO CREATE A RANGE OF HERITAGE MADE IN ENGLAND LEATHER GOODS AND PRODUCTS FULLY CERTIFIED SUSTAINABLE & ETHICAL THROUGH THE COMPLETE SUPPLY CHAIN. FROM SOURCE TO END OF LIFE PRODUCT IN A FULL CIRCULAR OFFER FOR TODAY'S CONSCIOUS CONSUMERS. WHILST SUPPORTING AND HELPING THE WIDER COMMUNITY ON WHOM WE DEPEND TO FUNCTION.

ETHICAL PRODUCTION - TRANSPARENT SUPPLY CHAINS - UK ARTISAN MAKING - SUSTAINABLY SOURCED

## VISION

TO LEAD THE WAY IN CREATING AN ONLINE RETAIL OFFER THAT BRINGS TOGETHER AUTHENTICATED, VALUE ADDED LUXURY BESPOKE PRODUCTS THAT ALSO RAISES COLLABORATIVE FUNDING FOR CHARITIES AND SOCIAL WELFARE AN INDUSTRY MOVEMENT BY DEFAULT RATHER THAN A CHOICE. A CHOICE DRIVEN BY OUR CUSTOMERS RATHER THAN BIG CORPORATES AND INVESTMENT COMPANIES.

OUR CUSTOMERS ARE THE CHANGE MAKERS AND NEW TREND

SOCIAL WEALTH NOT CORPORATE WEALTH

## ETHICS & SUSTAINABILITY

ALL OF OUR SUPPLY CHAIN, MATERIALS AND MANUFACTURING PARTNERS HAVE BEEN VERIFIED AND CHECKED TO ENSURE THEY ARE ADHERING TO SUSTAINABILITY FRAMEWORKS AND ETHICAL PRACTICES WHERE POSSIBLE AND THEY ARE LEADING AND IMPLEMENTING THE CHANGES THE FASHION INDUSTRY NEEDS FOR THE BENEFIT OF CONSUMERS..

AS A CONSUMER OF RESOURCES WE AIM TO BRING YOU OUR PRODUCTS IN THE MOST CONSIDERED WAY ENSURING ALL OUR SUPPLIERS, MATERIALS AND ETHICS ARE AS TRANSPARENT AS POSSIBLE. INVESTING IN A FUTURE PROCESS FOR THE END OF LIFE LEATHER GOODS, NOT JUST FROM US BUT OTHERS TOO IN AN INDUSTRY SOLUTION FOR ALL.

WE BELIEVE FULLY CIRCULAR IS THE ONLY OPTION

## TRANSPARENCY

OUR AIM IS TO BE TRANSPARENT AND AS ETHICAL AS WE CAN BE.

PART OF THIS COMMITMENT IS THE SHARING OF INFORMATION ABOUT OUR BUSINESS, FROM OUR SUPPLY CHAINS AND MATERIAL SOURCING TO OUR CHARITABLE DONATIONS AND MANY OTHER METRICS. SURE WE WON'T GET EVERYTHING RIGHT BUT STARTING FROM THE RIGHT CONSCIOUS AND SELF-AWARE FRAMEWORK ENSURES WE ARE ALWAYS LEADING THE HERD RATHER THAN FOLLOWING IT.

WE ARE PROUD TO BE DIFFERENT.

## TABLE OF CONTENT

	THE CORE STYLES	PAGE 5-20
	LIMITED EDITIONS & CAPSULE COLLECTIONS	PAGE 21 - 25
	OUR LEATHERS	PAGE 26 - 30
	HARDWARE	PAGE 31
	MANUFACTURING	PAGE 32 - 33
	QUALITY ASSURANCE	PAGE 34
	HOW TO ORDER / TERMS / PACKAGING	PAGE 35



**BELTSPOKE**

---



Luxury DEFINED



IT'S ALL ABOUT THE

**BARK**

**BBY**

Our signature classics the "ON collection" is our launch range of luxury "farm traced" English bridle leather women's belts tanned with "natural bark" extracts, to be as natural and as ethically sustainable as we can make them.

no more barking up the wrong fashion tree just

GUILT FREE - TRACEABLE & AUTHENTICATED LUXURY FASHION.

**ON**  
**COLLECTION**



# SHACKLE

# SHACKLE

SHACKLE IS A HARNESS STYLE DRESS BELT WITH CENTRAL BRASS FIXED CLOSED LOOP CLASP FITTING. WITH TWIN ADJUSTABLE STRAPS EITHER SIDE WITH SAM BROWN SECURING PRESS STUDS FOR ADJUSTMENT.

A MORE DRESS / FORMAL STYLE WITH ELEGANT DETAILING AND UNIQUE HARDWARE MAKES FOR AN ELEVATED ADDTION, SHOWN HERE IN LONDON TAN TRUE EQUESTRIAN CHIC

LONDON TAN



## SHACKLE

Product # ON-SHA

STRAP WIDTH 1.25 INCHES / 30 MM

TRADITIONAL HAND FINISHED UK BRIDLE LEATHER (TRACED BACK TO SOURCE SUPPLY)

SAM BROWN BRASS STUD TWIN SIDE ADJUSTMENT

TWIN MATCHING FLOATING KEEPERS

NATURAL SEALED FLESH BACKS - NO LINING

HEAT EDGE CREASING WITH CONTRASTING TONAL POLISHED EDGE STAIN

STAMPED "GENUINE BRIDLE LEATHER MADE IN ENGLAND" AND SIZE IN INCHES AND OUR "TRACE NUMBER"

TRADITIONAL SADDLE STITCH DETAILING WITH BEES WAXED LINEN THREADS AND HAND TACKED KEEPERS

FOUNDRY SAND CAST BRASS LOOP AND HOOK CENTRE FASTNENING STIRUP DESIGN HARDWARE HAND POLISHED.

LEATHER FINISH - WAXED USING TRADITONAL METHODS

Standard Colors



Bespoke colours





# WESTCOAST



# WESTCOAST

THE WESTCOAST WOMEN'S BRIDLE BELT. SHOWN HERE IN THE NEWMARKET TAN SEDGWICK BRIDLE LEATHER. HARNESSING THE SAND CAST BRASS FOUNDRY MADE HARDWARE ENSURES THIS IS BUILT TO LAST. LAYERED PANELS DOUBLE SADDLE STITCHED FOR STRENGTH. A WESTERN STYLE VIBE MAKE THIS A DIFFERENT ADDITION TO ANY STYLISH COLLECTION.

NEWMARKET TAN



## WESTCOAST

Product # ON - WES

STRAP WIDTH 1.25 INCHES / 38 MM

TRADITIONAL HAND FINISHED UK BRIDLE LEATHER (TRACED BACK TO SOURCE SUPPLY)

OVERLAP STYLE FIT WITH TOP STRAP STANDARD BELT FASTENING

SOLID CAST BRASS FIXED KEEPER

NATURAL SEALED FLESH BACKS - NO LINING

HEAT EDGE CREASING WITH CONTRAST BLACK / TONAL POLISHED EDGE STAIN

STAMPED "GENUINE BRIDLE LEATHER MADE IN ENGLAND" AND SIZE IN INCHES AND OUR "TRACE NUMBER"

TRADITIONAL SADDLE STITCH DETAILING WITH BEES WAXED LINEN THREADS

FOUNDRY SAND CAST SOLID BRASS POLISHED BUCKLE.

LEATHER FINISH - WAXED USING TRADITIONAL METHODS.

Standard Colors



Bespoke colours





# HOOKED

# HOOKED

IF YOU'RE NOT HOOKED BY THIS ONE THEN YOU SHOULD BE. HAND MADE ENGLISH SEDGWICK BRIDLE LEATHER SHOWN HERE IN CHESTNUT DARK BROWN. SADDLE STITCHED USING TRADITIONAL WAXED LINEN THREADS BY HAND, MATED TO A STYLISH BUT UNIQUE CAST BRASS POLISHED HOOK . A REAL CONVERSATION STARTER WITH THE HOOPED FASTENING TOO.

CHESTNUT DARK BROWN



## HOOKED

Product # ON - HOOK

STRAPTH WIDTH 1.25 INCHES / 30MM

TRADITIONAL HAND FINISHED UK BRIDLE LEATHER (TRACED BACK TO SOURCE SUPPLY)

OVERLAP STYLE FIT WITH HOOK AND LOOP FASTENING

MATCHING LEATHER HAND TACKED FLOATING KEEPER

NATURAL SEALED FLESH BACKS - NO LINING

HEAT EDGE CREASING WITH TONAL MATCHING AND POLISHED EDGE STAIN

STAMPED "GENUINE BRIDLE LEATHER MADE IN ENGLAND" AND SIZE IN INCHES AND OUR "TRACE NUMBER"

TRADITIONAL SADDLE STITCH DETAILING WITH BEES WAXED LINEN THREADS

FOUNDRY SAND CAST SOLID BRASS HOOK

LEATHER FINISH - WAXED USING TRADITIONAL METHODS

Standard Colors



Bespoke colours





# STRAIGHT

# STRAIGHT

THE WARDROBE STAPLE - THIS STRAIGHT CUT BLACK SEDGWICK BRIDLE BELT IS A CASUAL STYLE PAIRED EFFORTLESSLY WITH ANY OUTFIT FOR THAT RELAXED, UNCOMPLICATED LOOK. SOLID BRASS BUCKLE, WITH SADDLE STITCHED DETAILING AND FIXED KEEPER. A CLASSIC ! ALL TIME PIECE

BLACK



## STRAIGHT

Product # ON - STR

STRAP WIDTH 1.25 INCHES / 30 MM

TRADITIONAL HAND FINISHED UK BRIDLE LEATHER (TRACED BACK TO SOURCE SUPPLY)

STANDARD STRAIGHT CUT BELT CONSTRUCTION WITH STANDARD BUCKLE ADJUSTMENT WITH 5 HOLES

NATURAL SEALED FLESH BACKS - NO LINING

HEAT EDGE CREASING WITH BLACK MATCHING AND POLISHED EDGE STAIN

STAMPED "GENUINE BRIDLE LEATHER MADE IN ENGLAND" AND SIZE IN INCHES AND OUR "TRACE NUMBER"

TRADITIONAL SADDLE STITCH DETAILING WITH BEES WAXED LINEN THREAD

FOUNDRY SAND CAST SOLID BRASS ROUNDED STYLE BUCKLE HAND POLISHED

LEATHER FINISH - WAXED USING TRADITIONAL METHODS



Standard Colors



Bespoke colours





## SAM BROWN

# SAM BROWN

THE SAM BROWN MILITARY BELT IS A FAVOURITE FOR MANY. DEPENDABLE, STRONG AND WITH THE SOLID BRASS TWO PRONG BUCKLE THIS ISN'T GOING ANYWHERE FAST! UK SEDGEWICKS BRIDLE LEATHER, WITH DOUBLE SADDLE STITCHED BUCKLE ATTACHMENT. CONTRAST EDGE STAIN FOR THAT RAISED TOUCH OF ELEGANCE.

CONKER



## SAM BROWN

Product # ON - SB

STRAP WIDTH 1.50 INCHES / 38 MM

TRADITIONAL HAND FINISHED UK BRIDLE LEATHER (TRACED BACK TO SOURCE SUPPLY)

STANDARD "SAM BROWN MILITARY" ISSUE BUCKLE FASTENING

NATURAL SEALED FLESH BACKS - NO LINING

HEAT EDGE CREASING WITH BLACK / TONAL CONTRASTING POLISHED EDGE STAIN

STAMPED "GENUINE BRIDLE LEATHER MADE IN ENGLAND" AND SIZE IN INCHES AND OUR "TRACE NUMBER"

TRADITIONAL DBL SADDLE STITCH DETAILING WITH BEES WAXED LINEN THREADS

FOUNDRY SAND CAST SOLID BRASS SAM BROWN TWIN PRONG BUCKLE .

LEATHER FINISH - WAXED USING TRADITIONAL METHODS.

Standard Colors



Bespoke colours





# PRECIOUS



# PRECIOUS

THE PRECIOUS IS A UNCOMPROMISING STLYE STATEMENT PIECE. TRADITIONAL SEDGWICK BRIDLE WITH SINGLE 2" SOLID BRASS FOUNDRY CAST BRASS RING. TENSIONED SELF ADJUSTMENT MAKES THIS A SIMPLE AND ROBUST WARDROBE ESSENTIAL - CLASSIC WITH DENIM OR SUMMER DRESS TO TIE IN THE WAIST.

BLACK



## PRECIOUS

Product # ON - PRE

SSSTRAP WIDTH 1.50 INCHES / 38 MM

TRADITIONAL HAND FINISHED UK BRIDLE LEATHER (TRACED BACK TO SOURCE SUPPLY)

SIMPLE LOOP THRU & PULL SLIDE PULL TENSIONED ADJUSTMENT

NATURAL SEALED FLESH BACKS - NO LINING

HEAT EDGE CREASING WITH TONAL MATCHING AND POLISHED EDGE STAIN

STAMPED "GENUINE BRIDLE LEATHER MADE IN ENGLAND" AND SIZE IN INCHES AND OUR "TRACE NUMBER"

TRADITIONAL SADDLE STITCH DETAILING WITH BEES WAXED LINEN THREAD

FOUNDRY SAND CAST BRASS SOLID 2" INCH RING HAND POLISHED

LEATHER FINISH - WAXED USING TRADITIONAL METHODS



Standard Colors



Bespoke colours





# RIDER

# RIDER

THE RIDER IS A FORMAL DRESS STYLE BELT WITH STIRUP BRASS HOOK AND LOOP SOLID FOUNDRY BRASS FASTENING. TWIN FLOATING KEEPERS, SAM BROWN PRESS STUD SIDE ADJUSTMENT AND A ELEGANT LOOK, THIS IS SURE TO MAKE ANY EVENING OUTFIT POP!

POST BOX RED



## RIDER

Product # ON - RID

STRAP WIDTH 1.25 INCHES / 30 MM

TRADITIONAL HAND FINISHED UK BRIDLE LEATHER (TRACED BACK TO SOURCE SUPPLY)

SAM BROWN BRASS STUD TWIN SIDE ADJUSTMENT

TWIN MATCHING FLOATING KEEPERS

NATURAL SEALED FLESH BACKS - NO LINING

HEAT EDGE CREASING WITH CONTRASTING BLACK / TONAL POLISHED EDGE STAIN

STAMPED "GENUINE BRIDLE LEATHER MADE IN ENGLAND" AND SIZE IN INCHES AND OUR "TRACE NUMBER"

TRADITIONAL SADDLE STITCH DETAILING WITH BEES WAXED LINEN THREADS AND HAND TACKED KEEPERS

FOUNDRY SAND CAST BRASS LOOP AND HOOK CENTRE FASTENING STIRUP DESIGN HARDWARE HAND POLISHED

LEATHER FINISH - WAXED USING TRADITIONAL METHODS

Standard Colors



Bespoke colours





# JACK SPARROW

# JACK SPARROW

THE JACK SPARROW- FOR THOSE WOMEN WHO LIKE A BIT OF ADVENTURE, EXCITMENT AND WANT TO BE THEIR OWN CAPTAIN. THE SAND CAST POLISHED BRASS HOOF PICK BUCKLE WITH THE LOOP CLOSURE IS SURE TO CREATE A STAND OFF. SHOWN HERE IN THE SEDGWICK CHESTNUT DARK BROWN BRIDLE BUT EQUALLY AS ATTRACTIVE IN OUR OTHER STANDARD CLASSIC BRIDLE COLOURS.

CHESTNUT DARK BROWN



## JACK SPARROW

Product # ON - JSP

STRAP WIDTH 1.25 INCHES / 30MM

TRADITIONAL HAND FINISHED UK BRIDLE LEATHER (TRACED BACK TO SOURCE SUPPLY)

OVERLAP STYLE FIT WITH HOOK AND LOOP FASTENING

MATCHING LEATHER HAND TACKED FLOATING KEEPER

NATURAL SEALED FLESH BACKS - NO LINING

HEAT EDGE CREASING WITH BLACK / TONAL MATCHING AND POLISHED EDGE STAIN

STAMPED "GENUINE BRIDLE LEATHER MADE IN ENGLAND" AND SIZE IN INCHES AND OUR "TRACE NUMBER"

TRADITIONAL SADDLE STITCH DETAILING WITH BEES WAXED LINEN THREADS

FOUNDRY SAND CAST SOLID BRASS HOOF PICK HOOK WITH SWIVEL CENTRE POINT

LEATHER FINISH - WAXED USING TRADITIONAL METHODS.



Standard Colors



Bespoke colours





Part of our offer is our Exclusive Limited Edition Collections. Our "Floral" collection will be the first three piece collection to launch consisting of wide waisted contoured style belts. Along with these limited editions will be inspired capsule collections depicting other inspired themes throughout the year. These will be our "BANKSY OF BELTS" collections which we wish to be known for over time.

Each style made from Bespoke coloured Bridle leathers, hand crafted with and limited edition packaging. These you won't find on the Highstreet.

# LIMITED EDITION COLLECTIONS

# POPPY

The Poppy limited edition exclusive numbered production run limited to 150 units only represents a colourful iconic statement accessory for any wardrobe collection.

Constructed in our specially developed "Poppy Red" English bridle leather, hand waxed and finished as is tradition with cast brass hardware and signature hand detailing making this a one of a kind. exclusive purchase.

**YOU WON'T FIND THESE IN LUXURY RETAIL STORES OR ANYWHERE ELSE!**

bespoke made to pre-order only. Comes with it's own limited edition box and packaging, numbered certificate signed by the artisan and a little something extra for that longer than normal wait time.



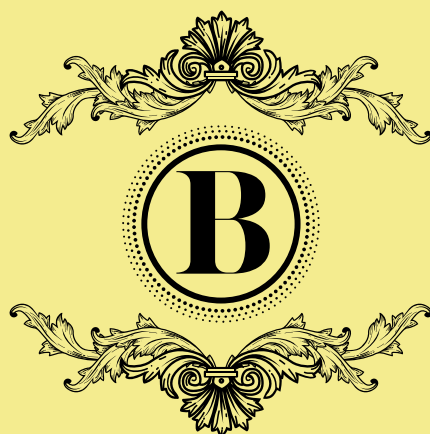
# DAISY

The "Miss Daisy" is the second limited edition exclusive numbered production as part of the floral women's collection.

limited production run of 150 units also represents a more subtle classic statement. Our bespoke white "English bridle leather made to order for this one off production. the bright yellow shine & hue of the sand cast brass hardware makes for a unique summer vibe. Pair it with that new summer dress for a classic elegant look.

## THESE ONLY GROW @ BELTSPOKE

Comes with it's own limited edition box and packaging, numbered certificate signed by the artisan and a little something extra for that longer than normal wait time.





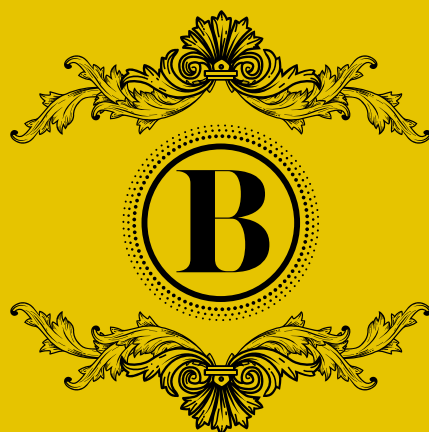
# BUTTERCUP

The last of the floral collection, will be the Buttercup.  
Bespoke yellow English bridle leather made to our own specification, just for this limited production run again for 150 units.

We just love our leather finishers they can make any colour we ask of them, which I am sure they don't mind. It's a good job as you won't find this leather on any other high street or luxury retailer.

## AND YES WE LOVE BUTTER @ BELTSPOKE

Comes with its own limited edition box and packaging, numbered certificate signed by the artisan and a little something extra for that longer than normal wait time.





Luxury DEFINED

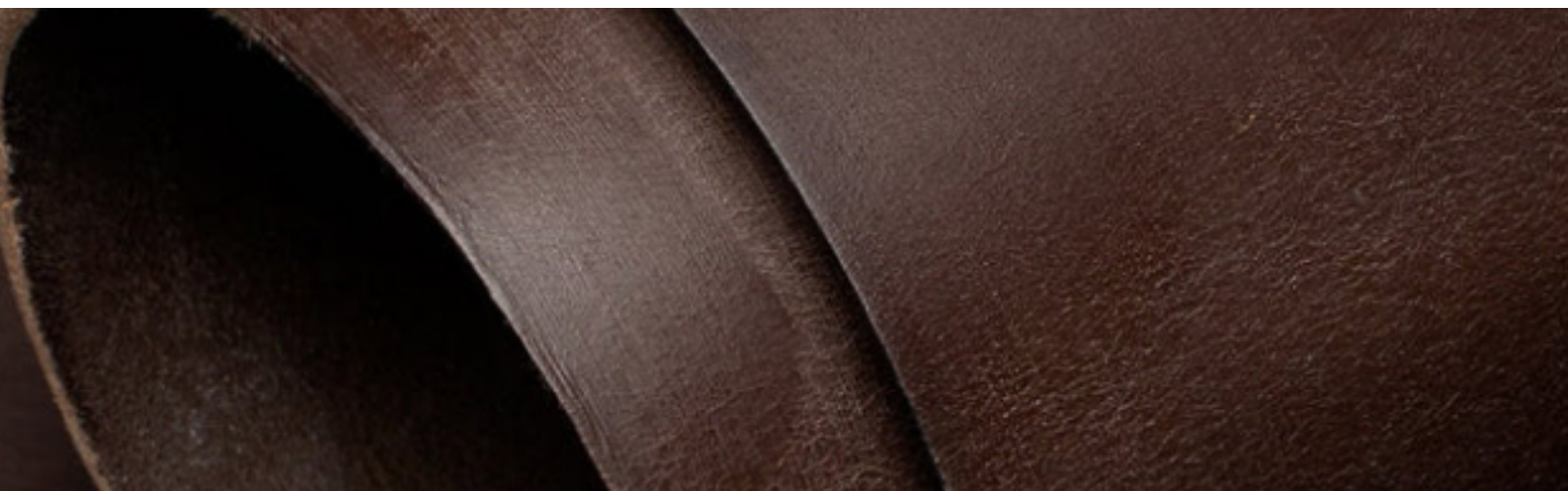


# LEATHERS



## STANDARD LEATHERS

All our belts are made from hand selected vegetable tanned bridle leather hides produced in the traditional way. We use “farm traced” hides for our core colours above from J & E Sedgwick. Our bespoke coloured bridle is made to order by Metropolitan Leathers. Both suppliers have over 200 years in heritage production between them. We also believe BELTSPOKE is the first leather goods company to stamp every product with the source trace number for authentication. Unique to each and every product made.



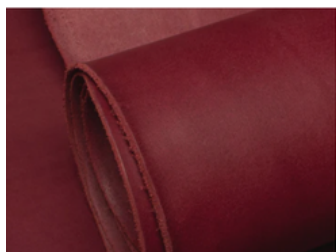
LEFT TO RIGHT

LONDON TAN  
POST BOX RED  
NEWMARKET TAN  
CONKER  
CHESTNUT DARK BROWN  
BLACK

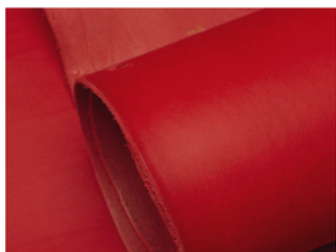


## BESPOKE LEATHERS

Our bespoke colours are not on the shelf stock materials and so we have to individually make each leather hide from scratch to the exacting BELTSPOKE colour you need. These are pantone matched to ensure as close the original colour as possible. Working with our suppliers Metropolitan Leathers we can manufacture any colour palette for that truly bespoke and exclusive bridle leather colour option. These are bridle leathers you won't find in retail.



POMEROL



FIESTA



ARAGOSTA



GIALLO



LIMONE



CLOROFILLA



AVOCADO



AGAVE



MENTA



TURCHESE



LAGUNA



COBALTO



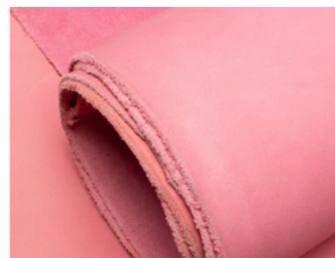
MARINE



NAVY



VIOLA



FUXIA

COLOURS ABOVE ARE INDICATIVE OF THE COLOURS WE CAN PRODUCE AND ARE FOR REFERENCE ONLY.  
IMAGES ARE OF ITALIAN VEG TANNED VACHETTA LEATHER BY TEMPESTI

## OTHER LEATHER OPTIONS

We are not restricted to just our unique “FARM TRACED” bridle leathers we can source any kind of leather for bespoke production and own brand manufacturing for clients. Our only criteria is that we don't use chrome tanned leathers only veg tanned from LWG approved tanneries. Many luxury fashion brands will use chrome tanned calf leathers, heavily finished and pigmented finishes which we feel are not a genuine as the full grain vegetable tanned options.



WAX - OIL PULL UP LEATHERS



EMBOSSSED & PATTERNED



SHELL CORDOVAN & ENGLISH TRADITIONAL BRIDLE LEATHERS.

ALL BESPOKE REQUESTS FOR ALTERNATIVE LEATHERS WILL BE **POA** AND BASED ON HOW BEST TO MANUFACTURE THE DESIRED BELTS, AS PRODUCTION USING ALTERNATIVE LEATHERS REQUIRES A DIFFERENT CONSTRUCTION METHOD.

WHILST EVERY EFFORT WILL BE MADE TO SECURE THE FARM TRACE DETAILS OF ALTERNATIVE LEATHERS WE CANNOT GUARANTEE THIS FOR SOME OUTSOURCED LEATHERS AT PRESENT. ALL ALTERNATIVE LEATHERS WILL COME FROM LWG APPROVED SUPPLIERS.

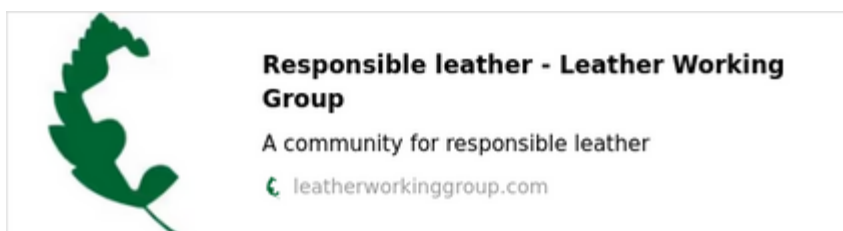
## LEATHER QUALITY & AUTHENTICITY

We only use and supply our products using genuine certified and authenticated vegetable tanned leathers. We do not use chrome tanned leathers. All our leathers are sustainably produced and certified by LWG (leather working group) or Pelle Conciata Al Vegetal in Toscana. This ensures we are only offering the most ethical and authenticated leathers that are backed by global compliance and yearly audits. Full certification and supply chain transparency is part of our ethical manufacturing policy.



"The use of this quality trademark is bound to the observance of the Technical Production Regulations that all member tanneries are committed to respect and guarantees leather made by the book.

The Genuine Italian Vegetable-Tanned Leather Consortium brings together 20 artisan tanneries of the Tuscan Leather District to protect their niche of high quality product, united by the same philosophy and values of production which are closely linked to the territory."



## HARDWARE

Our hardware is only sourced in the UK. We currently source from the last remaining sand cast brass foundry in the West midlands B.B.Stanley. Established in the 1800's they have been producing sand cast brass using traditional methods. We can also source Sheffield stainless steel and traditional English pewter and silver.

Buckle design and development is possible for that bespoke production or exclusivity for own brand production.

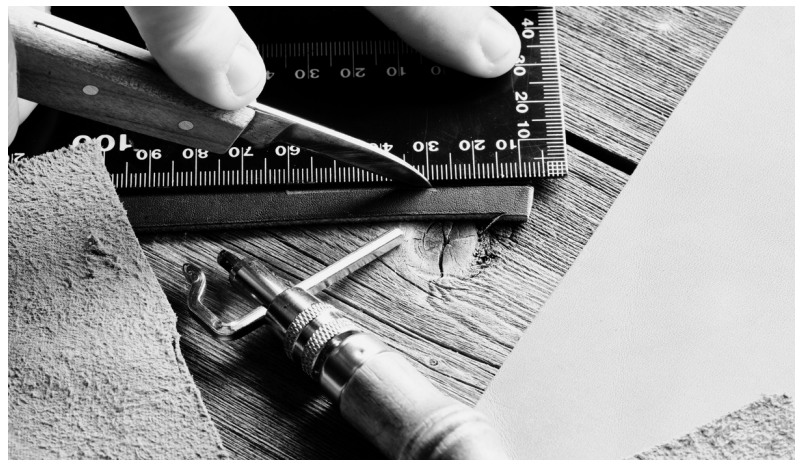
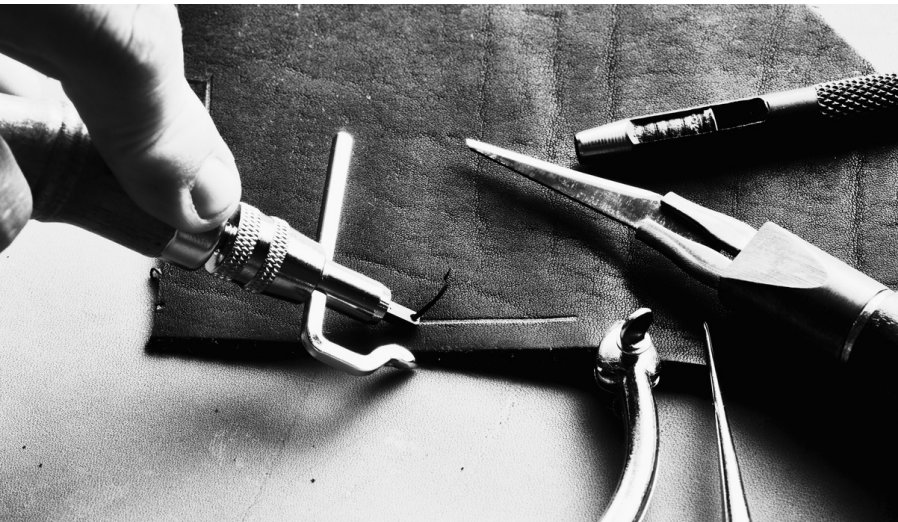


## MANUFACTURING

We hand make to order here in the UK, using traditional and heritage production skills and techniques. These are not cheap re branded imports or volume machine production. We have a team of artisan makers who have a life dedicated to their craft and its these skill sets that we employ in each and every belt made by hand. Carefully selecting the right people to hand craft each of our designs and products to ensure we are getting the best fit for each production. Our Makers are time served craftsmen and women who have made under Royal Warrants for queen and country.

Our lead times are typically 4 -8 weeks from order confirmation depending on quantity ordered. Any bespoke or own label production is likely to be a little longer. We will advise the estimated due shipping date as part of your final quote.

All lead times for production are dependant on the following. Leather availability, components and other materials and supplier lead times. We do not hold stock of our products and we only make to order for each and every customer, this ensures we only use the resources needed to fulfil each and every order placed with us again this is part of our sustainability and ethical manufacturing policy.





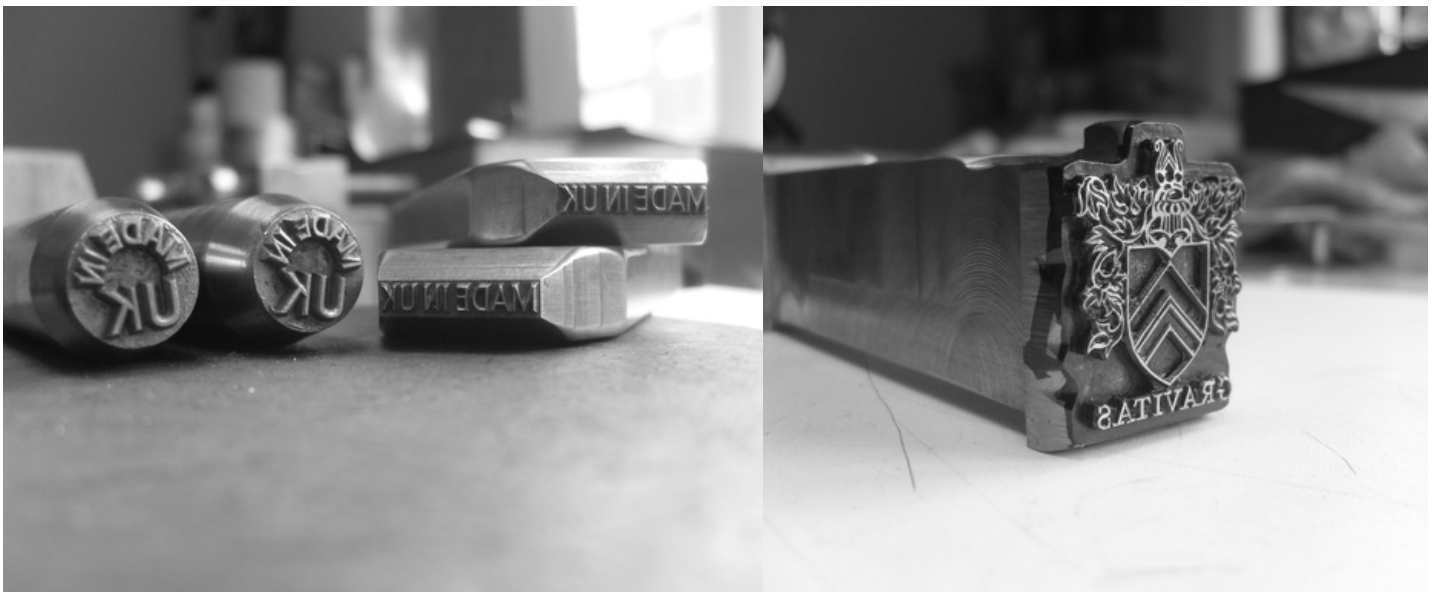
## OWN LABEL BRANDING

All our products will come blind embossed with GENUINE BRIDLE LEATHER - MADE IN ENGLAND unless another leather type is used, and the size in inches on the reverse of all our belts. Any other branding will be discretely added subject to your preferences. All our UK farm traced bridle leather belts will have our unique farm trace B - number added for authentication and traceability as part of our ethics and authentication policy. (where applicable leather dependant)

For our clients we are happy to discuss your branding options. At present we typically only offer blind embossing with a corporate logo or name as we are not a fan of the hot foils and inks used. We try to keep things as natural as possible.

We will however seek alternatives such as laser branding, printed and or hand painted if this is a must have and in keeping with the desired look and theme of your branding requirements or promotion.

We have manufactured a brass / metal stamping dies for this purpose and this will be an additional cost. Details for which will be quoted when you have supplied to us artwork and a vector file of your design. In most cases the typical costs would be in the region of £80.00 - £150.00 per stamp. The more complex the design the greater the costs.



## QUALITY ASSURANCE

We stand by our products 100% and due the nature of what we manufacture and the supply chains and people who help us deliver these to our customers you can be assured that you are buying a product that is made with twenty plus years experience in leather goods manufacturing sector. Collaborating and working with the best in the business.

We have worked in this sector for the following global brands either directly employed by them or via consultancy and re sourcing contracts over the last two decades.

**RALPH LAUREN - PAUL SMITH - MULBERRY - CHURCH'S - PRADA**

We only source the best possible quality leathers and materials. Assembled by the most talented artisans here in the UK and only deliver a product that we value ourselves and can certify through our supply chain transparency. We will happily stand our products shoulder to shoulder with any of the current big luxury global brands the only difference between them and us is a desire to provide luxury re defined as

SLOW FASHION

HAND MADE TO ORDER ONLY

NO UPFRONT DISCOUNTING TO CLEAR STOCKS

NO VOLUME OVER PRODUCTION AND STOCKING OF GOODS

CERTIFIED AND VETTED SUSTIANABLE SOURCING OF MATERIALS

FREE LIFE TIME GUARANTEE ON ALL PRODUCTS WITH REPAIR AND REFURBISHMENT SERVICES

FULL CIRCULAR END OF LIFE PRODUCT RETURNS WITH CUSTOMER LOYALTY REWARDS FOR LONG TERM OWNERSHIP

FREE CHOICE CHARITY AND SOCIAL WELFARE DONATIONS AT THE POINT OF SALE FOR EVERY PURCHASE MADE BY OUR CUSTOMERS



## LICENSED PARTNER

MR CHRISTIAN and sub brand BELTSPOKE are now licensed partners of The Sustainable Leather Foundation as of 2024.

Working with SLF ensures that not only are our products manufactured ethically and sustainable we hope to obtain full certification of our entire supply chain by 2025. whilst this is now part of new EU legislation within the de-forestation and anti greenwashing laws we are already setting the standard in the industry by how, why and where we produce and share this with a level of transparency not yet seen before in the leather and leather goods industry.

We continue to work collaboratively across the industry to ensure our customers are able to have peace of mind regarding the purchase of authenticated and certified leather goods for modern times.

LICENSE



WEBSITE



## HOW TO ORDER

All bespoke and own label production orders are subject to minimum production quantities. We don't hold stock of any of our materials as we make to order, for each and every customer who works with us. This ensures we do not waste or over purchase resources and materials. Our production is batch scheduled from start to finish in one go. By working this way it ensures consistency of production , quality and attention to detail is paramount.

### ORDERING

Individual customers are invited to pre order and pay through the website or via our crowdfunding page. For ALL wholesale and stockist enquiries please contact us. We will contact you to discuss your individual requests and requirements. Whilst we are happy for wholesalers to stock our range and BELTSPOKE products, we are also happy to make to your own specifications and branded needs, should you wish to add a range of our belts to your current offer to your customers.

### SHIPPING

Shipping will be FREE within the UK and charged (DAP) delivery at place for international shipments. All goods will be shipped using tracked services at the most affordable rates at the time of shipping. We are happy to use your own courier or shipping accounts if preferred. Please note that any international orders the customer will be responsible for the payment of import taxes and duties to receive the goods.

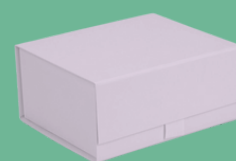
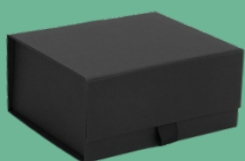
### PAYMENT

Own label and wholesale retail orders and payment terms are pro forma at the point of order confirmation and are ex vat. (we are currently not vat registered). Payment to be received in full prior to the manufacture and production of your order.

For companies seeking to retail as own brand or ongoing forward supply basis, we are open to negotiating favourable terms once an initial order has been made and fulfilled. All on going terms are subject to credit checks referencing and on time payments within agreed terms. The more established the relationship with us the more favourable the terms. Collaborative and transparent value added trading is our thing.

### PACKAGING

Our belts are individually boxed in our standard plain magnetic gift box packaging. We are equally happy to work with your own packaging supplier or can quote with our supplier again depending on the requirements and minimum quantities needed. We offer black matt , standard craft and white gloss boxes. You can specify which ones you would prefer to have the goods shipped in.



**WE LOOK FORWARD TO WORKING WITH YOU.**

TIME TO JOIN A NEW BREED IN LUXURY LEATHER GOODS FOR WOMEN.



CONTACT US VIA THE MR CHRISTIAN WEBSITE

[WWW.MR-CHRISTIAN.COM](http://WWW.MR-CHRISTIAN.COM)

OR

[HELLO@MR-CHRISTIAN.COM](mailto:HELLO@MR-CHRISTIAN.COM)

MADE IN ENGLAND

BELTSPOKE IS A SUB BRAND OF REGISTERED COMPANY MR CHRISTIAN SHORTLAND LTD 14285908

ALL RIGHTS © RESERVED 2023